

Wilcox's Line of Flip Mounts are designed for the EoTech and Aimpoint Magnifiers and the XPS Sight and are designed in several configurations with each version meant to flip out of the way when not in use and return to zero when back in operational mode.

PRODUCT DESCRIPTION

- Fixed Flip Mounts feature a variety of rail options with mount permanently affixed to the rail.
- Flip Mount for Aimpoint features Aimpoint Mounting Ring.
- Flip Mounts for EoTech available with and without rails and accomodate both Low Profile and 5/8 Rise configurations.
- Allows optic to flip to a stowed position for front sight visibility or to an operational position for magnifier operation.
- Lightweight with field proven dovetail attachment system.
- Aluminum construction for increased durability over currently fielded products.

FEATURES

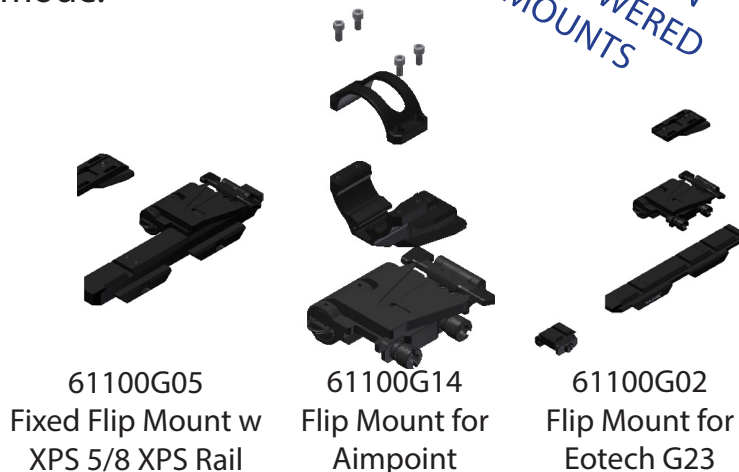
- Quick Disconnect mounting and dismounting of the magnifier to the weapon mount.
- Threaded connectors allow for easy mount and dismount of the mounting system.

PART NUMBERS Flip Mounts for Mini N-SEAS

55900G04	Weapon Mount Kit
55904G01	Weapon Mount Adaptor

PART NUMBERS Flip Mounts for Aimpoint Magnifier

61100G14	Flip Mount, Right Hand
61100G15	Flip Mount, Left Hand



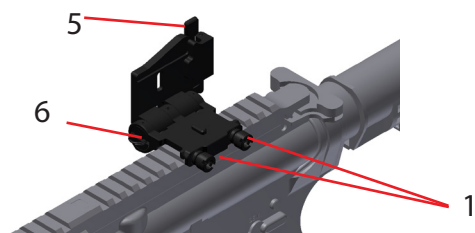
WARRANTY
LIFETIME ON
NON-POWERED
MOUNTS

PART NUMBERS Fixed Flip Mounts for EoTech and XPS Systems

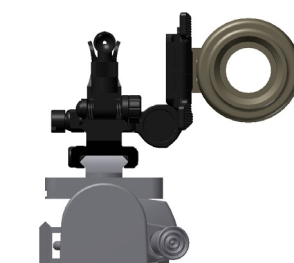
61100G05	Wilcox Fixed Flip Mount & XPS 5/8 Rise Set Screw Rail, Right Hand
61100G07	Wilcox Fixed Mount & XPS Low Profile Set Screw Rail, Right Hand
61100G08	Wilcox Fixed Mount & XPS Low Profile Set Screw Rail, Left Hand

PART NUMBERS Flip Mounts for EoTech G23 Magnifier and XPS Systems

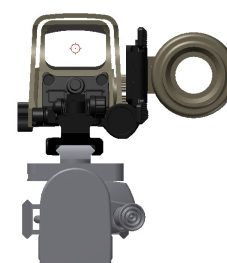
61100G01	Flip Mount Only, Right Hand
61100G06	Flip Mount Only, Left Hand
61100G02	G01 Flip Mount, Right Hand, and XPS Low Profile Set Screw Rail
61100G03	G01 Flip Mount, Right Hand, and XPS 5/8 Rise Set Screw Rail
61100G09	G06 Flip Mount, Left Hand, and XPS Low Profile Set Screw Rail
61100G04	G01 Flip Mount, Right Hand, and XPS 5/8 Rise Set Screw Rail



FlipMount, Depicted
in Stowed Position



Flip Mount
(Stowed for
Front Sight View)



Flip Mount
(Stowed for
XPS View)



Flip Mount
(Operational)

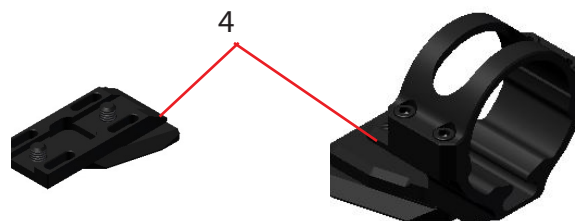
PRODUCT SPECIFICATIONS

The Wilcox Line of Flip Mounts features the following adjustments to customize position of the magnifier, and is available with and without rails.

1. Threaded connectors allow easy attachment and detachment of mount to the rail.
2. Optional mounting rails and front sight risers available for low profile and 5/8" height for use with XPS sight.
3. Force to Overcome Flip Mount allows magnifier to "flip up" to a stowed position for a more direct line of sight.
4. EoTech and Aimpoint Mounting Interfaces available for attachment to the mount.
5. Optic Release Lever allows dismounting of the optic.
6. Lanyard Ring prevents accidental loss of optic.

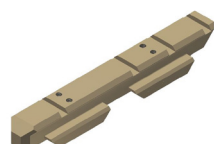
SPECIFICATIONS

Material Construction	Light Weight, Aerospace Grade Metal
Flip Angle for Stow	90°

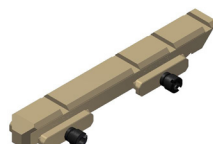


EoTech
Interface Shoe

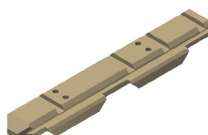
Aimpoint
Interface Ring



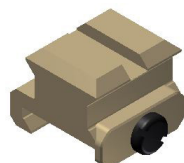
5/8" Rail,
Set Screw



5/8" Rail,
Thumb Screw



Low Profile Rail,
Set Screw



5/8" Front Sight
Riser



Low Profile
Front Sight

COLOR SAMPLES (AVAILABLE AS NOTED)



LEARN MORE